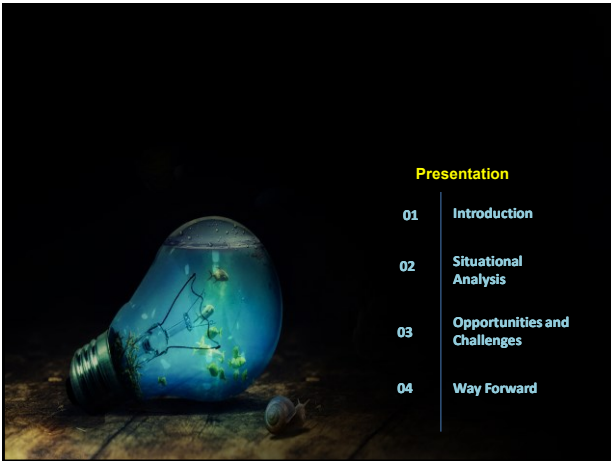




Madeline Berma
Shazlinda Md Yusof

**Promotion of Social
Entrepreneurship in Disaster Risk
Reduction for Community Resilience**

International Development Research Centre, CANADA
SEADPRI UKM
26th June, 2021



Presentation

- 01 Introduction
- 02 Situational Analysis
- 03 Opportunities and Challenges
- 04 Way Forward



Madeline Berma (PhD, FASc)
Shazlinda Mohd Yusof

Instructors



Situational Analysis - Malaysia

Situation 1: Slow Economic Growth

Chart 1: GDP (RM billion) and Annual Percentage Change

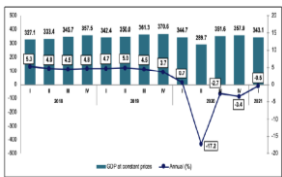
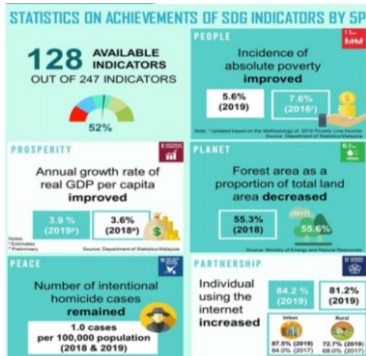
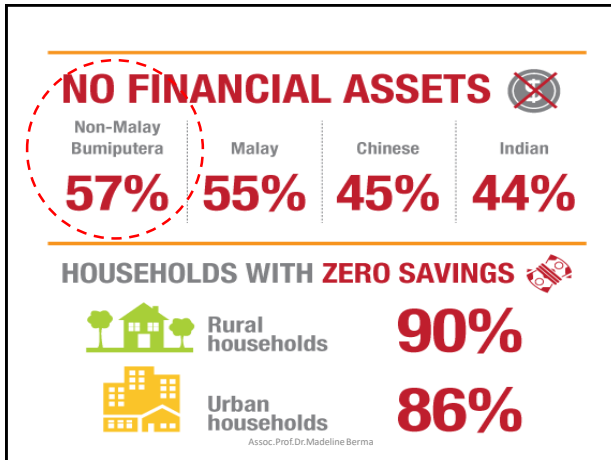


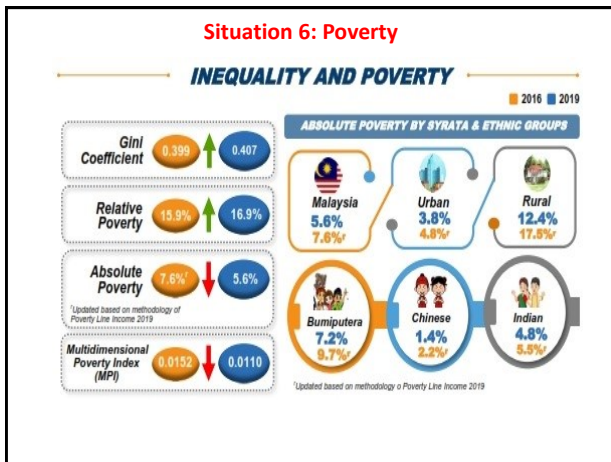
Chart 2: Quarterly GDP by Kind of Economic Activity

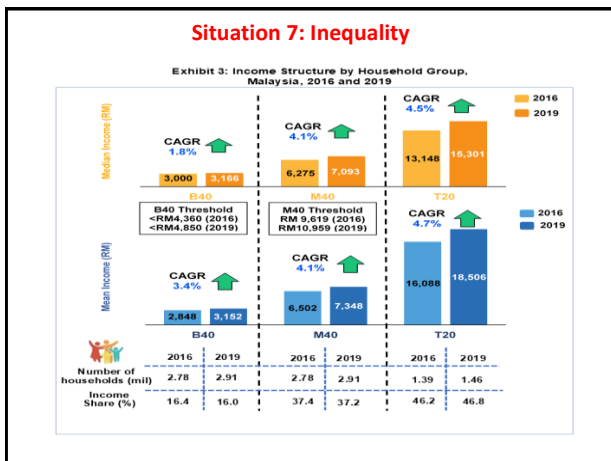


Situation 2: Achievements of SDG Indicators by 5P









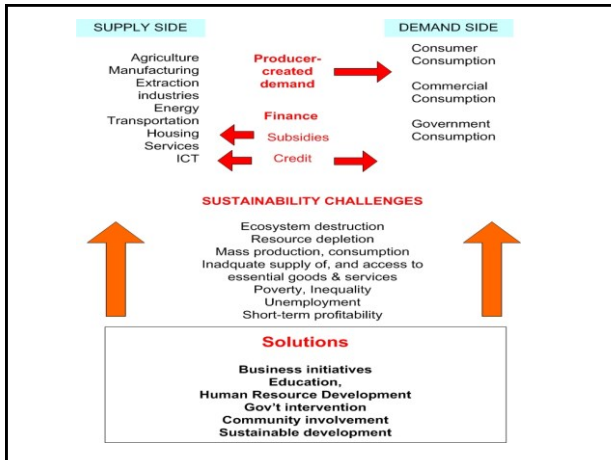


Photo: Madeline Berma
Kgg. Guchil, Kuala Krai, Kelantan

**Learning to give more than I can,
and and taking less than I need**

- Madeline -

Terima Kasih

Madeline Berma

Email: madeline.berma@gmail.com
